

WPA®

WATERPROOFING PRODUCTS AUSTRALIA



TILING
PRODUCTS
AUSTRALIA®



WATERPROOFING



WPA waterproofing products is a complete range of liquid & sheet applied waterproofing membranes and accessories

WPA waterproofing products is a complete range of Australian made, liquid and sheet applied waterproofing membranes and accessories developed by a team with over 230 years of hands on waterproofing experience and who are passionate about raising the standard of waterproofing in Australia. The WPA range is designed for the entire building, from waterproofing in-ground retaining walls, to waterproofing showers, bathrooms, decks, balconies, and rooftops.

WPA waterproofing membranes are designed for waterproofing applicators and have been specifically developed for Australian conditions and standards. All membranes have test reports available as CodeMark certification ensuring all Bayset waterproofing membranes are fit for purpose and meet or exceed Australian Standards.

CodeMark Australia Accreditation

The CodeMark Certification is a voluntary third-party building product certification scheme that authorises the use of new and innovative products in specified circumstances in order to facilitate compliance with Volumes One and Two of the NCC, also known as the Building Code of Australia or BCA. CodeMark provides confidence and certainty to regulatory authorities and the market through the issue of a Certificate of Conformity.





WPA 460

Two Part Water Based Epoxy Primer

WPA 230UV

Water Based UV Stable Polyurethane Membrane

WPA 360

Water Based Primer



WPA 360 is a water based, low solids, fast drying primer for wet area waterproofing using WPA 200, WPA 230UV, WPA 400, WPA 500 or WPA Rapid waterproofing membranes. WPA 360 may also be used as a primer for RLA levelling compounds. The application of WPA 360 aids in providing a substrate with uniform absorption and enhances adhesion of subsequent coatings.

- Solvent free.
- Non-hazardous.
- Fast drying.
- Good adhesion properties.
- Economical.

COLOUR	SIZE	UOM	CODE
Red (When Dry)	4 Litre	Drum	490-002
Red (When Dry)	15 Litre	Drum	490-003

WPA 160

Non-Porous Primer



WPA 160 is a specialised, solvent free primer designed to enhance the adhesion of subsequently applied waterproofing membranes, adhesives, toppings and decorative finishes on non-porous substrates. The unique formulation ensures outstanding adhesion over difficult to bond to surfaces, and offers a safe and environmentally friendly alternative to traditional methods of etching and solvent based primers.

- Solvent free, fast drying, non-tacky.
- Suitable for bonding to a wide range of metals, plastics, glazed, smooth and dense surfaces.
- Excellent adhesion properties.
- Time saving, simplified application.
- Suitable for internal and external applications.
- Can be directly covered with waterproofing membranes, tile adhesives, mortars and paints.

COLOUR	SIZE	UOM	CODE
Orange	1 Litre	Drum	490-009
Orange	4 Litre	Drum	490-008
Orange	10 Litre	Drum	490-007

WPA 460

Two Part Water Based Epoxy Primer



WPA 460 is a two part water based epoxy primer used to seal concrete and masonry surfaces. WPA 460 cures to a water resistant coating with excellent adhesion to most common building substrates.

- Water based, user friendly.
- Convenient mixing ratio, 1:1 by volume.
- Environmentally friendly.
- Excellent water resistance.
- Excellent adhesion to building substrates including concrete, fibre cement, all masonry surfaces and Scyon sheeting.
- 20 litre kit (10 Litre Part A + 10 Litre Part B).

COLOUR	SIZE	UOM	CODE
Grey	20 Litre	Kit	490-005

PRIMERS - WATER BASED



WPA 560 Moisture Seal Two Part Water Based Epoxy Primer



WPA 560 Moisture Seal is a two part, water-based epoxy primer designed as a water and vapour proof coating under waterproofing membranes, ceramic tile adhesives*, levelling compounds* and timber floors. (*additional priming required).

- Withstands hydrostatic head of water pressure up to 25 metres or 250kPa.
- Complies with AS 4020:2005 "Products for use in contact with drinking water".
- Complies with ASTM E96 for water vapour transmission.
- Convenient mixing ratio, 1:1 by volume.
- Excellent adhesion to building substrates including concrete, fibre cement, all masonry surfaces and Scyon sheeting.
- Water based and user friendly.

COLOUR	SIZE	UOM	CODE
Light Grey (Mixed)	8 Litre	Kit	490-135
Light Grey (Mixed)	20 Litre	Kit	490-134

PRIMER - SOLVENT BASED

WPA SB Solvent Based Primer



WPA SB Primer is a fast drying, solvent based primer, with exceptional penetrating properties. WPA SB Primer is designed to assist in improving adhesion on porous and some non-porous substrates.

- New or old concrete.
- Brick and block work.
- Compressed cement sheeting.
- Villaboard.
- Plywood.
- Primer for acrylic coatings.
- PVC flanges and pipes, aluminium, copper and stainless steel.

COLOUR	SIZE	UOM	CODE
Red Liquid	4 Litre	Drum	490-404
Red Liquid	20 Litre	Drum	490-006



WPA SB Solvent Based Primer

WPA 400

Undertile Waterproofing Membrane



WPA 400 is an elastomeric, fibre reinforced waterproofing membrane based on high performance polymer technology. Designed for a range of undertile waterproofing applications, WPA 400 offers excellent adhesion properties and outstanding low water vapour transmission properties. Fully compatible with polymer modified cement based tile adhesives, screeds and renders. The unique formulation provides excellent workability and film build. Class III membrane in accordance with ASNZS 4858 & AS 4654.1.

- Fast curing.
- Low VOC content.
- Completely resistant to re-emulsification when fully cured.
- Excellent adhesion to a wide variety of substrates.
- Compatible with a wide range of tile adhesives.
- Permanently flexible.
- Fibre reinforced.



COLOUR	SIZE	UOM	CODE
Blue	15 Litre	Drum	419-150
Grey	15 Litre	Drum	419-151

WPA 500

Undertile Waterproofing Membrane



WPA 500 is a waterborne flexible waterproofing membrane specifically designed for use under ceramic and stone tile finishes. The unique formulation provides excellent workability and film build. Class III membrane in accordance with ASNZS 4858 & AS 4654.1.

- Fast curing.
- Low VOC content.
- Completely resistant to re-emulsification when fully cured.
- Excellent adhesion to a wide variety of substrates.
- Compatible with a wide range of tile adhesives.
- Permanently flexible.
- Fibre reinforced.



COLOUR	SIZE	UOM	CODE
Blue	4 Litre	Drum	419-154
Blue	15 Litre	Drum	419-155
Grey	15 Litre	Drum	419-156

WPA Rapid

Fast Cure Membrane



WPA Rapid is a waterborne, flexible waterproofing membrane, utilising next generation, self-crosslinking technology, which enables the membrane to achieve cured properties rapidly. WPA Rapid is designed for use under tiles in internal and external applications. Class III membrane in accordance with ASNZS 4858 and AS 4654.1.

- Fast curing.
- Low VOC.
- Completely resistant to re-emulsification when fully cured.
- Excellent adhesion to a wide variety of substrates.
- Compatible with a wide range of tile adhesives.
- Permanently flexible.
- Fibre reinforced.



COLOUR	SIZE	UOM	CODE
Grey	15 Litre	Drum	419-153

MEMBRANES - WATER BASED



WPA 230UV Water Based UV Stable Polyurethane Membrane



WPA 230UV is an elastomeric, one part, fibre reinforced, water based polyurethane membrane suitable for waterproofing shower recesses, bathrooms, laundries, decks, balconies and rooftops. Class III membrane in accordance with AS/NZS 4858 & AS 4654.1.

- Low VOC content.
- Permanently flexible.
- Excellent adhesion to a wide variety of substrates.
- Single pack.
- Quick drying.
- Completely resistant to re-emulsification when fully cured.
- Safe and easy to use.
- UV stable.



COLOUR	SIZE	UOM	CODE
Grey	15 Litre	Drum	425-024
White	15 Litre	Drum	425-023

MEMBRANES - TRAFFICABLE

WPA TuffCote Trafficable Membrane



WPA TuffCote is a hard wearing, waterproofing membrane and slip resistant top coat for external floor surfaces. In addition to being a stand alone waterproofing membrane, it is designed to increase the slip and wear resistance of the WPA 230 UV and WPA 200 waterproofing systems in applications subject to residential foot traffic, varying climactic conditions and permanent UV light exposure.

WPA TuffCote bonds exceptionally well to WPA 230UV, WPA 200 and other suitably prepared surfaces, is resistant to fungi and algae growth and has excellent weather resistance. WPA TuffCote can also be used as a standalone surface coating on new or existing concrete surfaces to provide a fresh, rejuvenated and slip resistant finish. Recommended for roof areas, walkways, decks & balconies, rooftop plant rooms, general horizontal surface areas exposed to weather and foot traffic. Class II membrane in accordance with AS 4654.1.

- Resistant to fungi and algae growth.
- Solvent free, non-hazardous.
- Excellent weathering properties.
- Excellent adhesion to substrates.
- Excellent ponding water resistance.
- Foot trafficable.
- Provides a slip resistant surface, no broadcasting of aggregates required.
- Easy to clean and maintain.



COLOUR	SIZE	UOM	CODE
Light Grey	15 Litre	Drum	425-502
Slate Grey	15 Litre	Drum	425-503

WPA 100

Cementitious Waterproofing Membrane



WPA 100 is a single component, fibre reinforced, rapid drying, cementitious waterproofing membrane. It is based on special cements, modified with polymers and selected graded aggregates along with unique waterproofing additives to produce a flexible waterproofing compound. It is suitable for both positive and negative side waterproofing applications and is capable of withstanding significant strain.

- Class I membrane in accordance with AS/NZS 4858 & AS 4654.1.
- AS 4020:2018 approval for use with potable water.
- Fast curing.
- Suitable for both positive and negative hydrostatic water pressure applications.
- Salt water resistant.
- Permanently flexible.
- Completely resistant to emulsification.
- Excellent adhesion to a wide variety of substrates.
- Suitable for spray applications.



COLOUR	SIZE	UOM	CODE
Grey	20 kg	Bag	420-310

WPA 200

Two-Part Cementitious Waterproofing Membrane



WPA 200 is a highly flexible, two-part, rapid drying, cementitious waterproofing membrane, specifically designed for use under ceramic and stone tile finishes in bathrooms, balconies, rooftops and some swimming pools.

WPA 200 combines the fast drying and excellent adhesion characteristics of traditional two-part membranes with the outstanding toughness, elongation and flexibility of next generation acrylic waterproofing membranes. It is formulated to be UV resistant and is suitable for light (maintenance) traffic.

WPA 200 has excellent adhesion to concrete, cement screeds and most F/C sheets and may be used in conjunction with WPA Elastoband for maximum performance and ease of use.

- Class II membrane in accordance with AS/NZS 4858 & AS 4654.1.
- UV resistant.
- Suitable for light foot traffic.
- Compatible with a wide range of tile adhesives.
- Fast curing; permanently flexible.
- Completely resistant to re-emulsification.
- Excellent adhesion to a wide variety of substrates.
- Suitable for spray applications.



COLOUR	SIZE	CODE
Off White	40kg kit (20litre liquid & 20kg powder)	420-200

WPA 990

Polyurethane Waterproofing Membrane



WPA 990 is a single component, liquid applied, moisture cured polyurethane waterproofing membrane, suitable for waterproofing most non-exposed applications. WPA 990 cures to form a seamless, tough, durable, elastomeric waterproofing membrane. WPA 990 has excellent adhesion to most suitably primed building substrates and is suitable for above and below ground applications.

- Class III membrane.
- Excellent adhesion to a wide variety of substrates.
- Fast curing.
- Tar and bitumen free.
- Permanently flexible.
- Good chemical resistance.

COLOUR	SIZE	UOM	CODE
Grey	15 Litre	Drum	416-100

WPA 992

Polyurethane Waterproofing Membrane



WPA 992 is a thixotropic, one part, liquid applied, moisture cured polyurethane waterproofing membrane, suitable for waterproofing most non-exposed applications. WPA 992 cures to form a seamless, tough, durable, elastomeric waterproofing membrane. WPA 992 has excellent adhesion to most suitably primed building substrates and is suitable for above and below ground applications. Recommended for retaining walls, planter boxes, internal wet areas, balconies and decks.

- Class III membrane.
- Excellent adhesion to a wide variety of substrates.
- Fast curing.
- Tar and bitumen free.
- Permanently flexible.
- Good chemical resistance.
- Single pack.



COLOUR	SIZE	UOM	CODE
Charcoal	15 Litre	Drum	416-101

WPA 992UV

UV Stable Polyurethane Waterproofing Membrane



WPA 992UV is a thixotropic, one part, liquid applied, moisture cured polyurethane waterproofing membrane, suitable for waterproofing most applications.

WPA 992UV cures to form a UV stable, seamless, tough, durable, elastomeric waterproofing membrane. WPA 992UV has excellent adhesion to most suitably primed building substrates and is suitable for above and below ground applications. Recommended for retaining walls, planter boxes, internal wet areas, balconies & decks, rooftops or exposed applications.

- Class III membrane.
- Excellent adhesion to a wide variety of substrates.
- Fast curing.
- UV stable.
- Tar and bitumen free.
- Permanently flexible.
- Good chemical resistance.



COLOUR	SIZE	UOM	CODE
Grey	15 Litre	Drum	416-102

WPA AQUALAY

Waterproofing Sheet Membrane



WPA AQUALAY is an innovative, high performance, flexible, easy to implement new generation sheet waterproofing membrane system. The sheet itself consists of an EVAC core with a laminated non-woven geotextile fleece on either side of the central core. This unique system allows surface finishes including tiles, screeds, and topping to be installed within hours of the membrane installation.

Due to the highly flexible central core it also provides anti-fracture properties by isolating overlying finished substrates, surface cracks and defects.

- Fast installation and drying time.
- Suitable for direct installation of toppings, screeds, acoustic underlays and ceramics.
- Provides an anti-fracture system against surface cracks.
- Suitable for both vertical and horizontal substrates.



COLOUR	SIZE	UOM	CODE
Red	1M x 30M	Roll	450-590

WPA 1500

Decoupling Mat



WPA 1500 is a next generation, high performance decoupling and waterproofing sheet membrane for use under tile and stone installation in commercial and residential applications. WPA 1500 is specifically designed for use in areas where differential movement needs to be mitigated.

WPA 1500 consists of a base layer of non-woven polypropylene fabric anchoring fleece, thermally welded to a high density polypropylene, water impermeable core. The top layer consists of non-woven polypropylene fabric, thermally welded to the core, providing an excellent key for subsequently applied tile adhesive systems.

- Multi-function product.
- Excellent waterproofing properties.
- Effectively neutralises differential movement.
- Eliminates transmission of in-plane substrate cracks.
- Non-hazardous.
- Heavy duty.
- Light weight and easy to install.
- Fast track system.

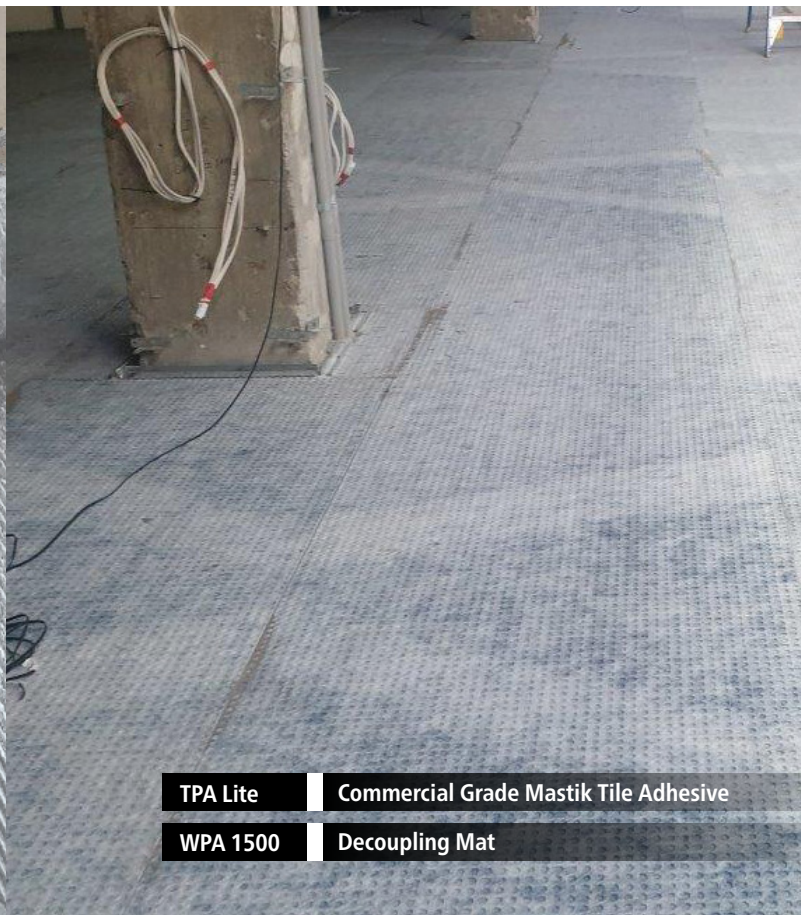


COLOUR	SIZE	UOM	CODE
Grey	1M x 30M	Roll	350-507

MEMBRANES - SHEET



WPA 200	Cementitious Waterproofing Membrane
WPA AQUALAY	Waterproofing Sheet Membrane



TPA Lite	Commercial Grade Mastik Tile Adhesive
WPA 1500	Decoupling Mat

WPA 3460

Polyurea Primer



WPA 3460 is a single component primer based on polyether polyol and modified MDI isocyanate. The primer is a polyurethane pre-polymer with a surplus of isocyanate which reacts with the moisture in the substrate to cure the product. The product was designed as a low viscosity concrete primer for preparing substrates prior to applying the WPA 3400 spray applied membrane.

- Very high bond strength.
- Deep penetration into concrete.
- Brush, roller or spray applied.
- Single component.
- Low viscosity.
- Fast reactivity.

COLOUR	SIZE	UOM	CODE
Violet	20 Litre	Drum	204-670

WPA 3400

Polyurea Spray



WPA 3400 is a two component, 100% solids, rapid curing, spray applied, hybrid polyurea, elastomeric waterproofing membrane. WPA 3400 is comprised of a polyether polyol, amine chain extender and MDI based isocyanate. WPA 3400 rapidly cures to form a high performance seamless, tough, durable, elastomeric waterproofing membrane, with good crack bridging properties. WPA 3400 has excellent adhesion to most suitably primed building substrates and is suitable for above and below ground applications.

- Class III membrane in accordance AS 4654.1.
- Rapid reactivity and curing time.
- Almost immediate return to service.
- Permanently flexible.
- Good chemical resistance.
- 100% solids.
- Excellent durability and abrasion resistance.
- Mercury free.

Recommended uses:

- Podiums.
- Rooftops.
- Retaining walls.
- Planter boxes.
- Water tanks.

COLOUR	SIZE	CODE
Pale Straw	42kg kit	204-671

WPA ATC

Polyurea Top Coat



WPA ATC is an economic, aliphatic, single component, liquid applied, moisture cured, polyurethane coating. It has been formulated as a complimentary topcoat for WPA 3400 (Polyurea) and WPA Moisture cure polyurethane membranes. WPA ATC offers protection from degradation of the waterproofing membrane due to UV exposure.

- UV stable.
- Excellent weatherability.
- Good colour retention.
- Fast curing.

Recommended uses:

- Rooftops.
- Plant rooms.
- Polyurea membranes.
- Polyurethane membranes.

COLOUR	SIZE	UOM	CODE
Light Grey	18.9 Litre	Drum	204-672



WPA 992UV | UV Stable Polyurethane Waterproofing Membrane

WPA FC

Fast Cure Polyurethane Sealant



WPA FC is a high performance, fast cure, one component polyurethane sealant. When cured it will form a tough, flexible seal and bond, capable of cyclic expansion and compression movement.

- Expansion/Contraction: 50% ($\pm 25\%$) as per ASTM C719.
- Service temperature -40°C to $+70^{\circ}\text{C}$.
- Excellent weathering and UV stability.
- Fast tack-free time and cure rate.
- High bond strength.
- Excellent adhesion to most materials including metals, concrete and brick.
- Paintable.
- Non-slumping.
- Resistant to fungal attack to AS1157.2.

Recommended uses:

- Sealing of floor joints in trafficable areas, including roads and runways.
- Sealing of vertical joints in precast concrete, brick, block work etc.
- Pick resistant - prisons, cells, schools and public amenities.
- Chemical resistant - service stations, hangers, aprons and bonded areas.
- Perimeter sealing of door and window framing.
- Adhesive for wide range of building and construction applications.
- Bond breaker/fillet for WPA moisture cured polyurethane membranes.

COLOUR	SIZE	UOM	CODE
Grey	600 ml	Sausage	700-160

WPA MS

Flexible Silane Modified Polymer Sealant



WPA MS is a single component, moisture cured silane modified hybrid sealant free of solvents and isocyanates, with a very low VOC content. When cured it forms a tough, flexible seal and bond, capable of cyclic expansion and compression movement.

- Expansion/Contraction: 50% ($\pm 25\%$) as per ASTM C719.
- Service temperature -50°C to $+120^{\circ}\text{C}$.
- Excellent weathering and UV resistance and colour stability.
- Fast tack-free time and cure rate.
- High bond strength.
- Excellent adhesion to most materials including metals, concrete and brick.
- Paintable.
- Resistant to fungal attack and does not support fungal growth.

Recommended uses:

- Sealing of floor joints in trafficable areas, including roads and runways.
- Sealing of vertical joints in precast concrete, brick, block work etc.
- Pick resistant - prisons, cells, schools and public amenities.
- Chemical resistant - service stations, hangers, aprons and bonded areas.
- Perimeter sealing of door and window framing.
- Adhesive for a wide range of building and construction applications.
- Bond breaker/fillet sealant for use with selected waterproofing membranes from the WPA product range.

COLOUR	SIZE	UOM	CODE
Grey	600 ml	Sausage	800-105

WPA SPUR Low Modulus Hybrid Sealant



WPA SPUR is a high quality, professional, universal, low modulus sealant based on hybrid technology. WPA SPUR cures under the influence of atmospheric moisture and is free of solvents and isocyanates with a very low VOC content. When cured it forms a tough, flexible seal and bond, capable of cyclic expansion and compression movement. Joints or fabrications formed with this sealant can be expected to extend and compress a total of 50% ($\pm 25\%$) of original joint dimensions to ASTM C719.

- Excellent adhesion without primer to most, even damp surfaces.
- Low modulus ($\pm 25\%$ joint movement).
- Moisture curing, almost odourless.
- Free of isocyanates, solvents and silicones.
- No shrinkage.
- No bubbling.
- Good resistance to UV, water and weather.
- Permanently elastic.
- High mechanical resistance.

Recommended uses:

- In situ concrete and render.
- Precast and tilt up panels, brickwork and block work.
- Plasterboard face and paper lined recessed edges.
- Fibre cement sheet.
- Aluminium windows.
- GRC, fiberglass and mostly specialty panel systems.
- Treated timber and stainless steel.
- Bond breaker/fillet sealant for use with selected waterproofing membranes from the WPA product range.

COLOUR	SIZE	UOM	CODE
Grey	600 ml	Sausage	800-106



WPA FC Fast Cure PU



WPA MS Silane Modified Sealant



WPA SPUR Low Modulus Sealant

WPA PUR F400

Polyurethane Injection Resin



WPA PUR F400 is a solvent and phthalate free, water reactive, hydrophobic, closed cell, low viscosity, shrink free, flexible, one component polyurethane injection resin designed to shut off water leaks.

Field of application:

- Shut off water leaks in concrete, brickwork and sewers where movement and settlement may occur.
- Water cut-off of water leaks in foundations such as diaphragm walls, piling sheets and secant piles.
- Sealing water-carrying cracks and joints in tunnel segments.
- Curtain grouting behind tunnel, concrete, brickwork and sewer walls.
- Injection of water cut-off membranes and liners in tunnels.

Features:

- One component.
- Different reaction times are possible by adjusting the percentage of GEN ACC accelerator.
- The closed-cell structure of cured polyurethane ensures permanent flexible sealing of cracks and joints.
- Cured polyurethane is flexible, shrink-free and exhibits good chemical resistance (contact our Technical Service for Chemical Resistance).
- Cured polyurethane is harmless for the environment and resistant to biological attacks.

ITEM	SIZE	UOM	CODE
WPA PUR F400	3.8 Litre	Kit	205-301
WPA PUR F400	18.9 Litre	Drum	205-300
WPA Accelerator	1.89 Litre	Drum	205-305

WPA PUR GT500



WPA PUR GT500 is a single component, low viscosity, flexible hydrophilic polyurethane foam injection resin.

Field of application:

- Sealing cracks in concrete structures through pressure injection.
- Sealing hairline cracks, expansion joints, wide cracks, pipe joints and pipe penetrations.
- In foundations such as diaphragm walls, piling sheets and secant piles.
- Curtain grouting behind tunnel, concrete, brickwork and sewer walls.
- Saturating dry oakum to create a flexible gasket for sealing pipe penetrations, joints and larger defects in concrete structures.

Features:

- No catalyst required.
- Tenacious bond to wet concrete.
- High elongation.
- Thin enough to penetrate tight cracks.
- Moderately hydrophilic.
- Environmentally friendly (Phthalate free).
- Certified NSF 61-5 (Approved contact with drinking water).

ITEM	SIZE	UOM	CODE
WPA PUR GT500	5 Litre	Drum	205-303
	18.9 Litre	Drum	205-302

WPA AG200

Acrylic Injection Gel



WPA AG200 is an ultra-low viscosity acrylic injection resin, based on acrylic monomers. After injection, the resin gels in a few seconds to a few minutes based on the amount of activator/initiator added just before use.

The final injected product is a soft and slightly sticky crosslinked gel which becomes more jelly like as water is added to the base acrylic resin.

Field of application:

- Soil conditioning, stabilisation and coagulation.
- Curtain grouting behind existing structures.
- Filling of voids, hollow spaces and gaps behind structures.
- Filling and waterproofing gravel nests in concrete.
- Waterproofing of underground structures in concrete and masonry.
- Waterproofing cracks in rock formations.
- Injection of re-injectable injection hoses.
- Below grade expansion joints.

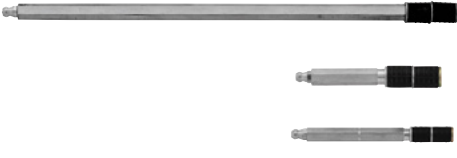
Features:

- Non-toxic for the environment.
- Non flammable.
- No acrylamide.
- Very low viscosity.
- Durable in wet and dry conditions.


ITEM	SIZE	UOM	CODE
WPA AG200	20 Litre	Kit	205-310



WPA Injection Hose System

WPA	Aluminium Injection Packer		
	<p>Economical packer with removable anti-return valve in zerk fitting permits port to port travel technique by removing the zerk fitting.</p> <p>Bayset carries an extensive range of packers and couplers in many sizes and configurations.</p>		
	SIZE	UOM	CODE
	10mm x 100mm	Each	920-045
	13mm x 100mm	Each	920-041
13mm x 300mm	Each	920-040	

INJECTION SYSTEMS - INJECTABLE HOSE SYSTEM

WPA	Injection Hose Kit			
	<p>WPA Injection Hose is a re-injectable injection hose system, used to seal construction joints in concrete structures against water ingress. WPA Injection Hose is used to carry injection grout materials along the length of the hose and disperse it into the concrete joint via micro-ports along the hose. WPA Injection Hose is a highly durable, robust, single channel injection hose system, made from specially formulated PVC materials.</p> <p>Recommended uses:</p> <p>Construction joints that may require sealing against water ingress or require joint sealing in:</p> <ul style="list-style-type: none"> • Basements and below ground structures. • Tunnels and underground vaults. • Water and sewerage treatment plants. • Water tanks and pools. • Suspended slabs and roof slabs. <p>Kit contains:</p> <ul style="list-style-type: none"> • WPA Injection Hose x 30 lineal meters. • WPA Feeder Hose x 2.0 lineal meters. • WPA Injection Hose Connectors x 8. • WPA Shotcrete Dual Injection Ports x 3. • WPA Injection Hose Fastening Clips x 200. 			
	COLOUR	SIZE	UOM	CODE
	Red	11mm x 30M	Kit	907-055
	Injection Hose Components			
<p>All WPA Injection Hose Components can be purchased as individual items.</p>				
ITEM	SIZE	UOM	CODE	
WPA Injection Hose	11mm x 120M	Roll	907-050	
WPA Injection Feeder Hose	50M	Roll	907-052	
WPA Injection Hose Connector	-	Each	907-053	
WPA Shotcrete Dual Injection Port	-	Each	907-054	
WPA Injection Hose Fastening Clips	-	100pce Pack	907-057	

WPA 2010

Hydrophilic Self Adhesive Water Stop



WPA 2010 is a new generation, self-adhesive, high performance acrylic polymer base expanding hydrophilic water stop. It's designed to stop water ingress through cast in place concrete structures. It expands up to 900% when in contact with water to form a positive seal against the concrete surface.

WPA 2010 will shrink back to its original size when it dries and will re-expand on wetting. WPA 2010 is used for sealing of low movement and static construction joints for both horizontal and vertical applications including cold joints, wall to base connections, penetrations, sealing of openings and interface sections between existing and new concrete surfaces.

- Easy to install with no priming required.
- Self-adhesive backing.
- Light weight.
- Easily handled rolls.
- Suitable for both fresh and salt water installations.

COLOUR	SIZE	UOM	CODE
Blue	20mm x 10mm x 10M	Roll	711-350



WPA 2010 | Hydrophilic Self Adhesive Water-Stop

WPA Elastoband

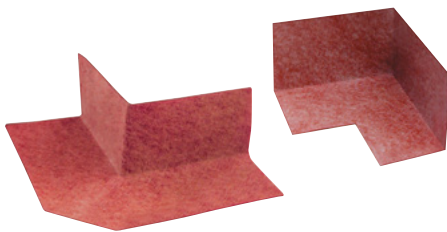
Joint & Penetration Detailing Systems



WPA Elastoband is an innovative detailing system designed for waterproofing and sealing all types of joints, junctions and general areas subject to movement. Elastoband can accommodate movement in longitudinal, lateral and transverse directions enabling high elongation, rupture resistance, and up to 100% elastic recovery. Elastoband is easy to install and provides for considerable time saving efficiencies and durable properties over conventional bond breaking sealants and tapes.

- Time saving simplified installation.
- Eliminates need for sealant bond breakers and tapes.
- Long term protection at critical joint intersections and movement zones.
- Accommodates movement in longitudinal and lateral directions with up to 100% elastic recovery.
- Constructed of a unique high strength rubber compound that is rupture, chemical and water resistant.
- Can be used in areas subject to full immersion.
- Compatible with all WPA membranes.
- Suitable for commercial, industrial and residential applications.

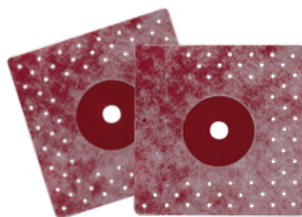
COLOUR	SIZE	UOM	CODE
Red	120mm x 50M	Roll	301-310
Red	120mm x 1LM	Length	301-310-CUT



Prefabricated Joint Corner

- 270° external joint corner.
- 90° internal joint corner.

COLOUR	SIZE	UOM	CODE
Red	External 270°	Each	301-313
Red	Internal 90°	Each	301-312



Prefabricated Joint Tap Collar

- Tap Collar

COLOUR	SIZE	UOM	CODE
Red	120mm x 120mm	Each	301-311



WPA Elastoband

Joint & Penetration Detailing Systems

WPA BUTYL TAPE

Multi Purpose Self Adhesive Detailing Tape



The WPA Butyl Waterproofing Tape is a multipurpose self-adhesive sealing bandage designed for flashing and detailing a variety of surfaces. With outstanding adhesion properties of the butyl rubber backing, the WPA Butyl Tape is ideal for sealing internal and external surfaces that require protection against moisture ingress, vibration and flexing.

The WPA Butyl Tape provides an instant seal to the surface it is applied to, avoiding down time for drying or curing. Ideally suited for waterproofing, roofing and general building applications the Butyl Waterproofing Tape is designed to be finished over with WPA adhesives, membranes, coatings, mortars, adhesives and renders.

- Solvent free, non-toxic peel n stick application.
- Primer-less application (on dust free and stable surfaces).
- Excellent adhesive properties over a variety of surfaces.
- Easy workability and deformability over substrates.
- Excellent thermal stability.
- Flexible, rupture and tear resistant.
- Outstanding adhesion retention at low temperatures.
- Instant sealing properties, no drying required.
- Compatible with cement-based finishes, e.g. tile adhesive, renders, textures, etc.

Recommended uses:

- Sealing puddle flanges, penetrations and joint intersections.
- Detailing, pvc, flashings, etc.
- Guttering and roofing.
- Reinforcement bond breaker.

COLOUR	SIZE	UOM	CODE
Grey	100mm x 30M	Roll	301-321

WPA REINFORCING FABRIC



WPA Reinforcing Fabric is a 40 gram spun polypropylene fabric used for reinforcing WPA liquid applied membranes.

Also suitable for use in between coats of membranes when used over metal surfaces covering pin holes or sheet laps.

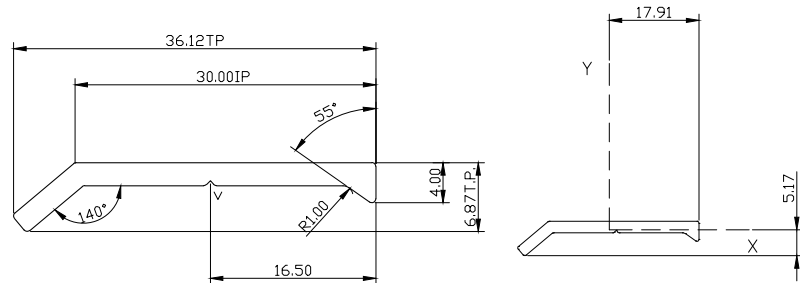
Other sizes available by order.

COLOUR	SIZE	UOM	CODE
White	100mm x 100M	Roll	301-510
White	150mm x 100M	Roll	301-511
White	200mm x 100M	Roll	301-520
White	1M x 100M	Roll	301-514

WPA PRESSURE SEAL



Aluminium Pressure Seal is an aluminium extrusion designed for the termination of sheet membrane systems.



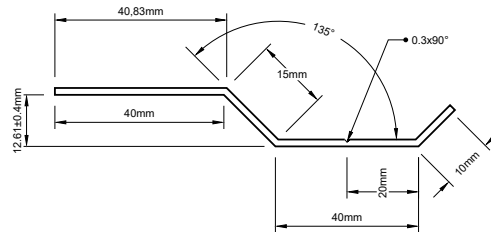
COLOUR	SIZE	UOM	CODE
Mill Finish	35mm x 3M	Length	450-050

WPA K FLASING PRESSURE SEAL (with Fixing Penetrations)



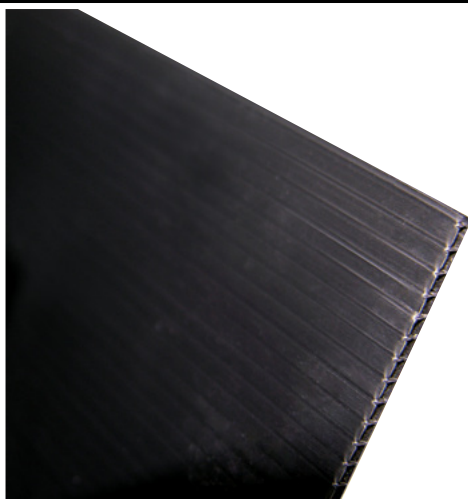
Aluminium K Flashing is an extruded aluminum flashing with pre-punched holes, designed for the top termination of sheet membrane systems.

The unique design and pre-punched fixing holes makes the WPA K Flashing Pressure Seal easy to use and aesthetically pleasing when working with parapets and other exposed terminations.



COLOUR	SIZE	UOM	CODE
Mill Finish	3.02M	Length	450-051

WPA Coreflute Sheets

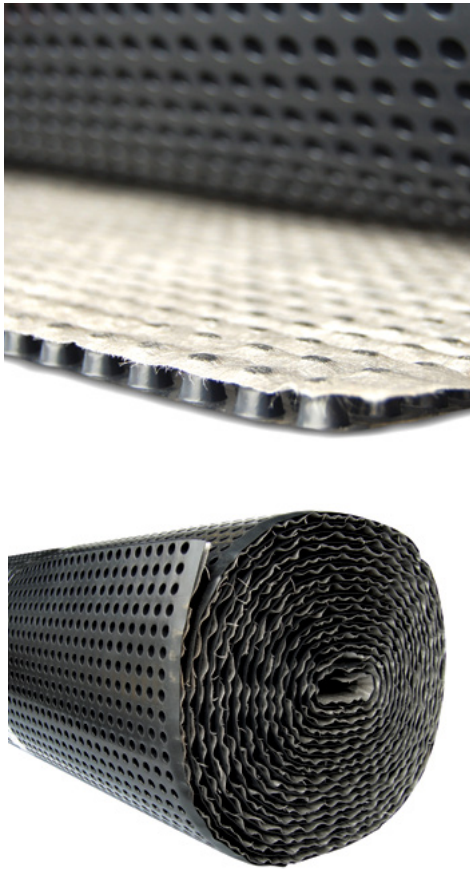


Polypropylene Copolymer Protection Board for membrane, retaining wall and flooring protection from subsequent after trades.

- 300 g/m²

COLOUR	SIZE	UOM	CODE
Black	2mm x 1.8M x 1.2M	Each	300-002

WPA DRAINAGE CELL



WPA Drainage Cell is a two-core drainage sheet consisting of a non-woven geotextile filter layer thermally welded to a water impermeable, recycled HDPE (High Density Polyethylene) drainage membrane.

WPA Drainage Cell provides outstanding drainage and protection to the outside face of basement walls, preventing the build-up of water pressure and protecting the structure from aggressive water, chemicals and toxins.

- Recycled and recyclable HDPE core.
- Prevents water pressure from bearing against the structure.
- Resistant to all chemicals normally found in the ground.
- Withstands stresses and movement acting as a slip membrane as the backfill settles.
- Extremely strong material, minimising the risk of damage.
- Very high compressive strength.
- ECO manufactured with no production waste.
- Suspended soil particles (fines) are filtered out by the geotextile layer.
- Quick and easy to install with a range of ancillary fixing and installation products.

Recommended uses:

- As the drainage layer of an externally applied waterproofing system when used in conjunction with sheet applied or liquid applied external tanking membrane to BS8102:2009.
- Protection of the structure from aggressive chemicals in the ground water.
- To prevent the build-up of ground water to retaining walls.

COLOUR	SIZE	UOM	CODE
Black	2M x 20M (40M ²)	Roll	350-500
Black	1M x 2M (2M ²)	Length	350-500-CUT



PRIMER SELECTOR CHART

Substrate	WPA SB	WPA 160	WPA 360	WPA 460	WPA 560
In Situ Concrete	✓		✓	✓	✓
Precast Concrete & Tilt Up Concrete	✓		✓	✓	✓
Masonry Brick & Block Work	✓		✓	✓	✓
Plasterboard	✓		✓	✓	✓
Compressed Fibre Cement Sheeting	✓		✓	✓	✓
James Hardies Scyon Secura Sheeting				✓	✓
Low density tongue and groove FC flooring	✓	✓		✓	✓
PAA Certified Structural & Marine Plywood	✓	✓			
Rigid Plastics (Except HDPE)	✓⊕	✓			
Existing Ceramic Tiles		✓			
Aluminum	✓⊕	✓			
Stainless Steel	✓⊕	✓			
Copper	✓⊕	✓			
Galvanised Iron	✓⊕	✓			
Zincalume	✓⊕	✓			
Damp Masonry Surfaces				✓	✓
Water based Membranes	✓	✓	✓	✓	✓
Polyurethane Membranes (Moisture cured)	✓			✓	✓
Moisture Barrier on Damp Wall/Floors					✓
Sealing Concrete Floors before Vinyl & Timber Overlays					✓

⊕ Moisture cured polyurethane membranes only.

TRANSITION SELECTOR

Membrane	WPA FC	WPA MS	WPA SPUR	WPA Butyl Tape	WPA Elastoband
WPA 100				✓	✓
WPA 200				✓	✓
WPA 230UV		✓	✓	✓	✓
WPA 400		✓	✓	✓	✓
WPA 500		✓	✓	✓	✓
WPA 990	✓			✓	✓
WPA 992	✓			✓	✓
WPA 992UV	✓			✓	✓
WPA 1500					✓
WPA Aqualay				✓	✓
WPA Rapid		✓	✓	✓	✓

WPA SELECTOR CHARTS



MEMBRANE SELECTOR CHART

Recommended Area	WPA 100	WPA 200	WPA 230UV	WPA 400	WPA 500	WPA 990	WPA 992	WPA 992UV	WPA 1500	WPA Aqualay	WPA Rapid
Lift Pits	✓	✓				✓	✓	✓			
Retaining Walls	✓	✓				✓	✓	✓			
Planter Boxes	✓	✓				✓	✓	✓			
Podium Decks	✓	✓	✓	✓	✓	✓✘	✓✘	✓✘	✓	✓	✓
Sills & Reveals			✓	✓	✓						✓
Internal Wet Areas	✓	✓	✓	✓	✓	✓✘	✓✘	✓✘	✓	✓	✓
Balconies & Terraces	✓	✓	✓	✓	✓	✓✘	✓✘	✓✘	✓	✓	✓
Roof Tops - Tiled	✓	✓	✓	✓	✓				✓	✓	✓
Exposed Rooftops (Maintenance Traffic Only)	✓	✓	✓					✓✘			
Box Gutters		✓	✓								
Water Tanks (Potable Water)	✓										
Water Tanks (Non-Potable Water)	✓	✓									
Swimming Pool - Tiled	✓☆	✓☆									
Spa's and Saunas - Tiled	✓☆	✓☆									

☆ Requires WPA 560 Moisture seal. ✘ Not suitable for direct fixing of tiles.

Sealant Quantity Estimation Chart

Joint size in mm	Litre per metre run (bulk applications)	Metre run per 300ml cartridge	Metre run per 600ml cartridge	Joint size in mm	Litre per metre run (bulk applications)	Metre run per 300ml cartridge	Metre run per 600ml cartridge
5 x 5	0.025	12.4	24.0	20 x 10	0.200	1.55	3.0
5 x 10	0.050	6.20	12.0	20 x 15	0.300	1.04	2.0
5 x 15	0.075	4.20	8.0	20 x 20	0.400	0.78	1.5
10 x 10	0.100	3.10	6.0	25 x 12.5	0.310	1.00	2.0
10 x 15	0.150	2.00	4.0	25 x 15	0.380	0.81	1.6
10 x 20	0.200	1.55	3.0	25 x 20	0.500	0.62	1.2
10 x 25	0.250	1.24	2.4	25 x 25	0.630	0.50	0.9
15 x 10	0.150	2.06	3.9	30 x 15	0.450	0.69	1.3
15 x 15	0.225	1.35	2.7	30 x 20	0.600	0.51	1.0
15 x 20	0.300	1.04	2.0	30 x 25	0.750	0.42	0.8
15 x 25	0.375	0.82	1.6	40 x 20	0.800	0.39	0.8
15 x 30	0.450	0.69	1.3	40 x 25	1.000	0.31	0.6
15 x 40	0.600	0.51	1.0				

Coverage Calculation Formula: Joint Depth(mm) x Joint Width(mm) x Joint Length(metre) ÷ Cartridge Size(mls) = Units required



www.wpa-aus.com.au



www.tpa-aus.com.au